

(en) Instructions for INVISICLOSE™ FOAM TAIL

For full instructions, please refer to Instructions For Use in Skin Barrier carton.

(ar) إرشادات لذيّل الرغوة INVISICLOSE™

للمزيد من المعلومات يرجى الرجوع إلى طريقة الإستعمال على علبة الحاجز الجلدي سكين بارير

(hr) Upute za INVISICLOSE™ Spužvasti sustav zatvaranja

Za cjelovitu pouku, molimo proučite Upute za Uporabu koje se nalaze u pakiranju Podložnih Pločica.

(cs) Návod na použití výpusti s chlopní

Detailní postup najdete v Návodu na použití přiloženém v balení stomických podložek.

(da) Vejledning for INVISICLOSE™ Udløbsåbning med skumlap

For udførlig vejledning henvises til indlægssedlen i æsken

(nl) Instructies voor INVISICLOSE™ sluiting

Voor een volledige instructie kijkt u svp ook naar de instructies in de bijsluiters van de huidplaat

(et) Kasutusjuhend INVISICLOSE™ pehme sabakinnituse kohta

Täieliku kasutusjuhendiga tutvumiseks palun vaadake alusplaatide karbis olevat kasutusjuhendit.

(fi) Käyttöohjeet INVISICLOSE™-sulkijan turvaläpälle

Tarkempi käyttöohje ihonsuojalevyn tuotepakkauksessa.

(fr) Mode d'emploi du système de fermeture INVISICLOSE™ FOAM

Pour un mode d'emploi complet, se reporter à la notice d'utilisation dans la boîte de supports cutanés.

(de) Gebrauchsanweisung für den verbesserten INVISICLOSE™ Verschluss

Um die vollständige Gebrauchsanweisung einzusehen, lesen Sie bitte die Gebrauchsanweisung in der Box mit den dazugehörigen Basisplatten.

(el) Οδηγίες για INVISICLOSE™ Αφρώδες Τελείωμα

Για πλήρεις οδηγίες παρακαλώ αναφερθείτε στις Οδηγίες Χρήσης στην συσκευασία της βάσης

(hu) Használati útmutató a habzivacs zárófüles INVISICLOSE™ nyitott zsákhöz

A teljes használati útmutatót, kérjük, az alaplap dobozában mellékelt használati útmutatóban keresse.

(it) Istruzioni per la chiusura INVISICLOSE™ con fondo in schiuma

Le istruzioni d'uso complete sono contenute nel foglietto illustrativo presente all'interno della confezione delle placche.

(lv) Instrukcija INVISICLOSE™ putu aizdares lietošanai

Lai iegūtu plašāku informāciju, lūdzu, skatīt Lietošanas instrukciju, kas atrodas pamatnes kastē.

(lt) INVISICLOSE™ FOAM TAIL Naudojimo instrukcija

Prašome laikytis plokštelės naudojimo instrukcijos nuorodų

(mk) Упатство за ПЕНЕСТО ЗАСИЛЕН INVISICLOSE™ ИСПУСТ

За целосно упатство, ве молиме погледнете го Упатството за Употреба на картонската кутија за Леплива Подлога

(no) Bruksanvisning for INVISICLOSE™ FOAM POSELÅS

For full bruksanvisning, vennligst se bruksanvisningen som er vedlagt hudbeskyttelsesplatene.

(pl) Instrukcja obsługi zapinki INVISICLOSE™ FOAM

Przed zastosowaniem zapoznaj się z pełną instrukcją stosowania dostępną z opakowaniem płytek stomijnych.

(pt) Instruções para a utilização de INVISICLOSE™ FOAM TAIL

Consulte as Instruções de Utilização dos protectores cutâneos para obter as instruções completas

(ro) Instrucțiuni pentru sistemul de închidere INVISICLOSE

Pentru instrucțiuni complete, vă rugăm să consultați instrucțiunile de utilizare din cutia flanșei.

(ru) Инструкция по применению встроенной застёжки INVISICLOSE™ с фиксатором на пенной основе

Для получения другой дополнительной информации по использованию обратитесь к инструкции по применению, вложенной в коробку с адгезивными пластинами.

(sr) Uputstvo za upotrebu za INVISICLOSE™ penastu traku na ispusnom delu kese

Za kompletno uputstvo, pogledajte uputstvo za upotrebu u kutiji sa diskovima.

(sk) Návod na použitie penového výpustu INVISICLOSE™

Kompletný návod na použitie nájdete v návode na použitie v balení podložiek.

(sl) Navodila za INVISICLOSE™ penasto zapiralo

Za podrobnejša navodila si oglejte navodila za uporabo v škatli s kožnimi podlogami.

(es) Instrucciones para el uso de INVISICLOSE™ FOAM TAIL

Diríjase a las Instrucciones de Uso de apósitos para obtener instrucciones completas.

(sv) Instruktioner för INVISICLOSE™ påslås

För fullständig information, läs bruksanvisning i förpackningen för hudskyddsplattor.

(tr) INVISICLOSE™ Köpük Kuyruk Kapanışı için Kullanım Talimatları

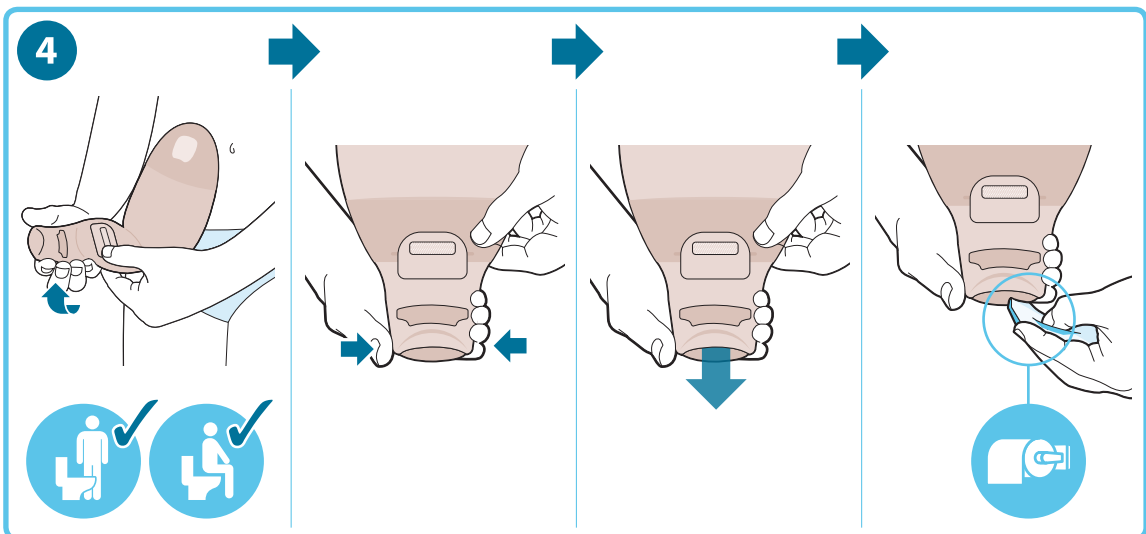
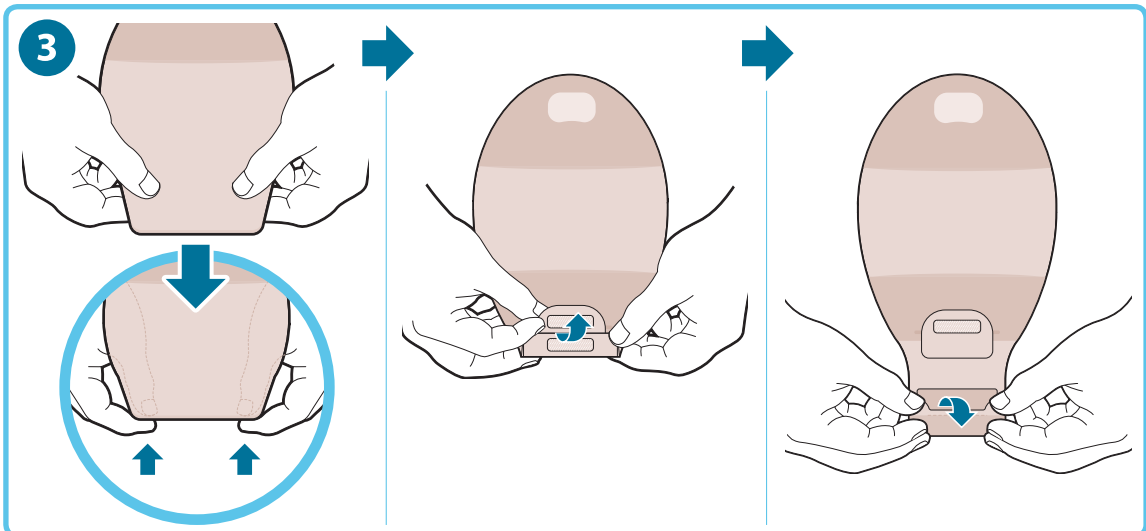
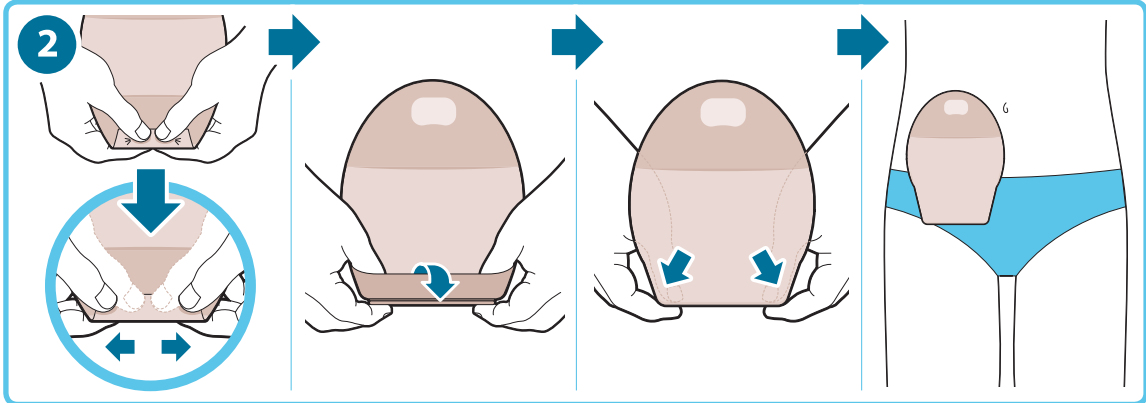
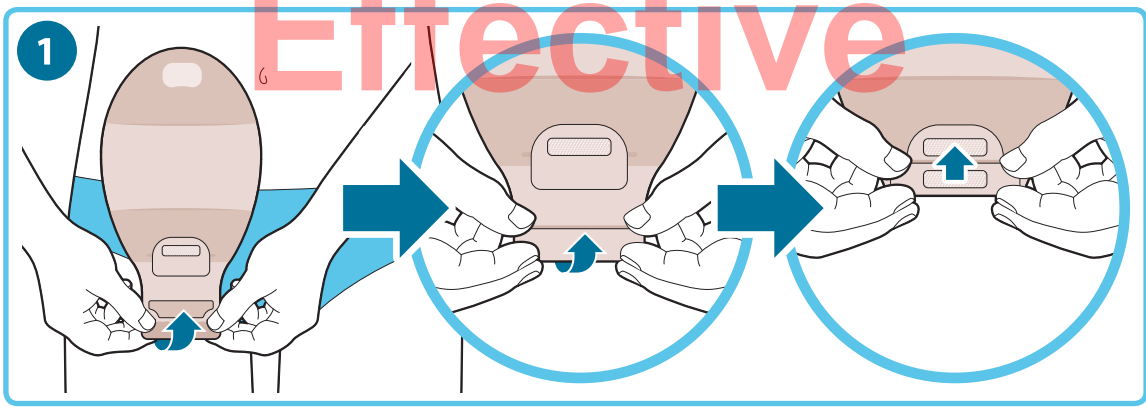
Talimatların tamamı için adaptör kutusunun içerisindeki Kullanım Talimatlarına bakınız.

(bg) Инструкции за гъвкава лента INVISICLOSE™

За пълни инструкции се отнесете, моля, към инструкциите за употреба в кутията на плочката.



Effective



ConvaTec Limited
 First Avenue, Deeside Industrial Park
 Deeside, Flintshire, CH5 2NU, UK

EC REP UNOMEDICAL A/S
 Aaholmvej 1-3, Osted
 4320 LEJRE DENMARK

CH REP ConvaTec International Services GmbH
 Mühlentalstrasse 36/38
 8200 Schaffhausen, Switzerland

© 2022 ConvaTec Inc.
 ®/™ indicates a trademark of ConvaTec Inc.



Revised 2022-02
 1713771V1

Effective

ARTWORK SPECIFICATION	
Artcode	1713771V1
Artwork Description	INS INVICLOSE FOAMTAIL INSTR (EUR)
ICC*	416416, 416415, 416423, 416417, 416420, 416419, 416422, 416737, 416733, 416732, 416729, 416728, 416725, 416724, 416721, 416719, 416718, 420288, 420294, 420306, 420307, 420310, 420318, 420321, 420325, 420327, 420330, 420333, 420337, 420339, 420340, 420343, 420429, 420430, 420435, 420436, 420441, 420442, 420447, 416418, 416421, 416424, 423380, 423381, 423382, 423383, 423384, 423385, 423386, 423387, 423388, 423389, 423390, 416975, 416976
SAP*	1703597, 1703598, 1703599, 1703601, 1703602, 1703611, 1703612, 1703623, 1703650, 1703655, 1703656, 1703657, 1703659, 1703660, 1703662, 1703663, 1703664, 1703671, 1703672, 1703673, 1703674, 1703675, 1703680, 1703682, 1703687, 1703688, 1703691, 1703693, 1703697, 1703698, 1703699, 1703700, 1703710, 1703711, 1703712, 1703713, 1703714, 1703715, 1703716, 1703731, 1703732, 1703733, 1733579, 1733580, 1733581, 1733582, 1733583, 1733584, 1733585, 1733586, 1733587, 1733588, 1733589, 1728754, 1728756
KOM/REF*	N/A
IS Code*	N/A
Component Type	Insert
LR#	LR-004587
Existing Art Code being Revised	1713771
REQUIREMENT	SPECIFICATION
Bucket	EUR
Local Code(s)	N/A
Size Code / Dieline	10067
Dimensions	210 x 297 mm flat size, 210 x 148,5 mm folded
Color(s) / Colour(s)	PMS 4745, PMS 7468C, PMS 297C, black
Specification Reference(s)	MT56-005
Bar Code: UPC (A) or GTIN**	N/A
Bar Code: PZN – Code 39**	N/A
Bar Code: JAN-13**	N/A
* NOTE: Bar Code: See artwork for positioning, magnification and truncation. Scanability verified to ANSI grade "C" or better.	
HISTORY	
13-SEP-2016 / 1713771: Create an insert for the EUR bucket using artcode 1713751 (NAI bucket) as a template for the graphics. Insert the EUR translations in place of the NAI translations. The size of the insert will be determined by adding the translations but would be within the acceptable guidelines for the packaging testing already existing. Carton size for fold pattern is 11.5' X 6.375' X 1.75' (see 1702143G1)	
15-SEP-2016 / 1713771: Rerouting art for initial review to labeling only for limited approvals as comments placed in CEDAR regarding revisions to Swedish, Turkish, and Bulgarian are incorrect. Correct text has been used on revisions to exclude all text related to Manufacturing site.	
8-FEB-2017 / 1713771: No art change, the artwork specification updated.	
06-Jun-2017 / 1713771: No Art changes required, only the artwork specification documentation needs to be updated. Updates required to add new ICC codes to spec documentation. No change to art codes.	
26-Jan-2018 / 1713771: Update of ICC and SAP codes, no change to art component.	
06-May-2021 / 1713771: No change to art, ICC and SAP codes added.	
10-Sept-2021 / 1713771: No artwork change. ICC and SAP codes added.	
09-Feb-2022 / 1713771V1: Copyright date and revision date were updated. EC REP symbol, address and Importer symbol below EC REP symbol were added. MD symbol, do not re-use symbol and language codes were added. CH REP and importer symbol with address were added. Version of artcode was increased to "V1". Manufacturer symbol was updated.	
22-June-2022 / 1713771V1: Removed specification MT71-102 because of was added by mistake.	